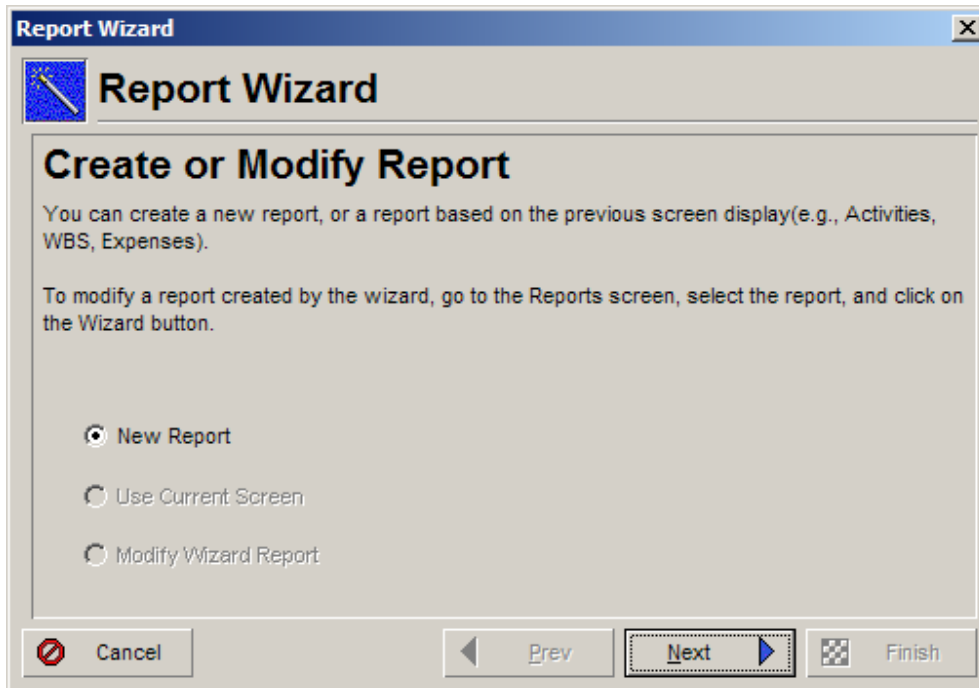
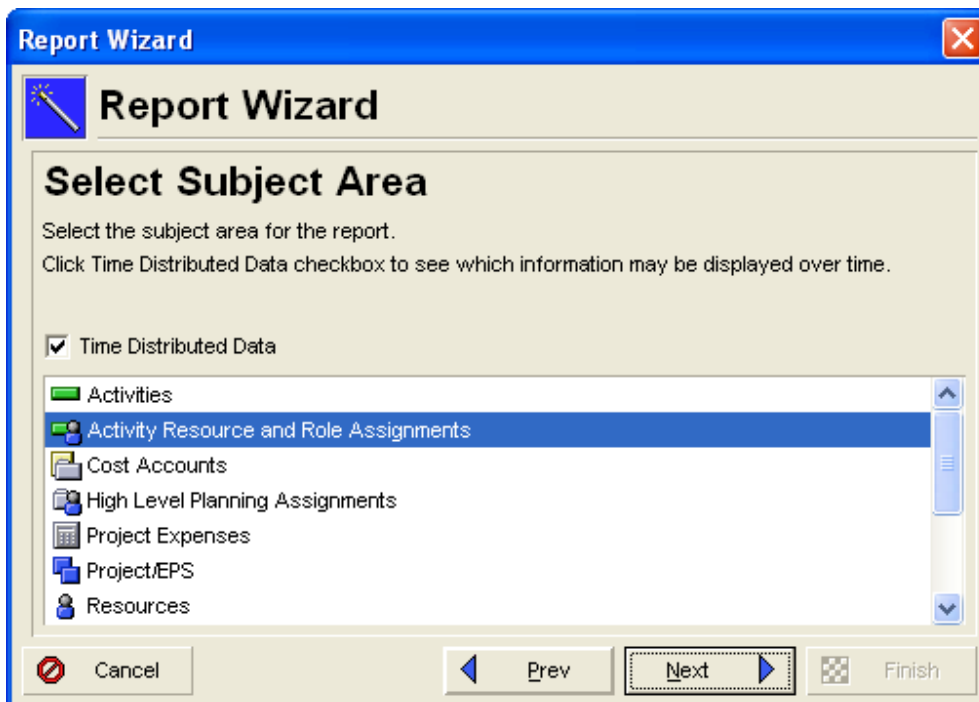


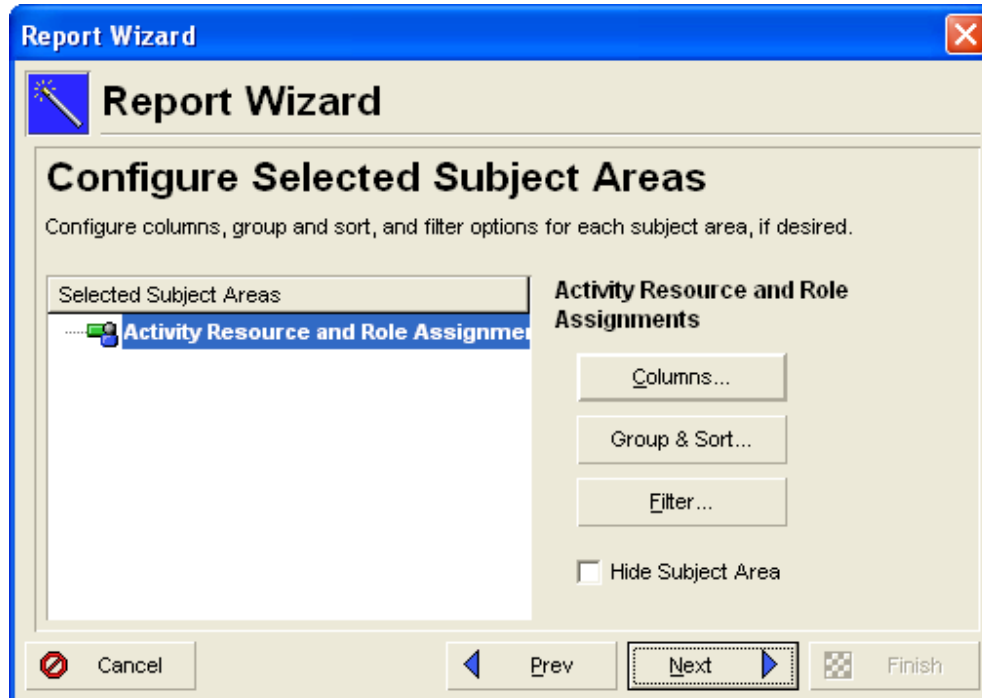
Create New Report in Report Window



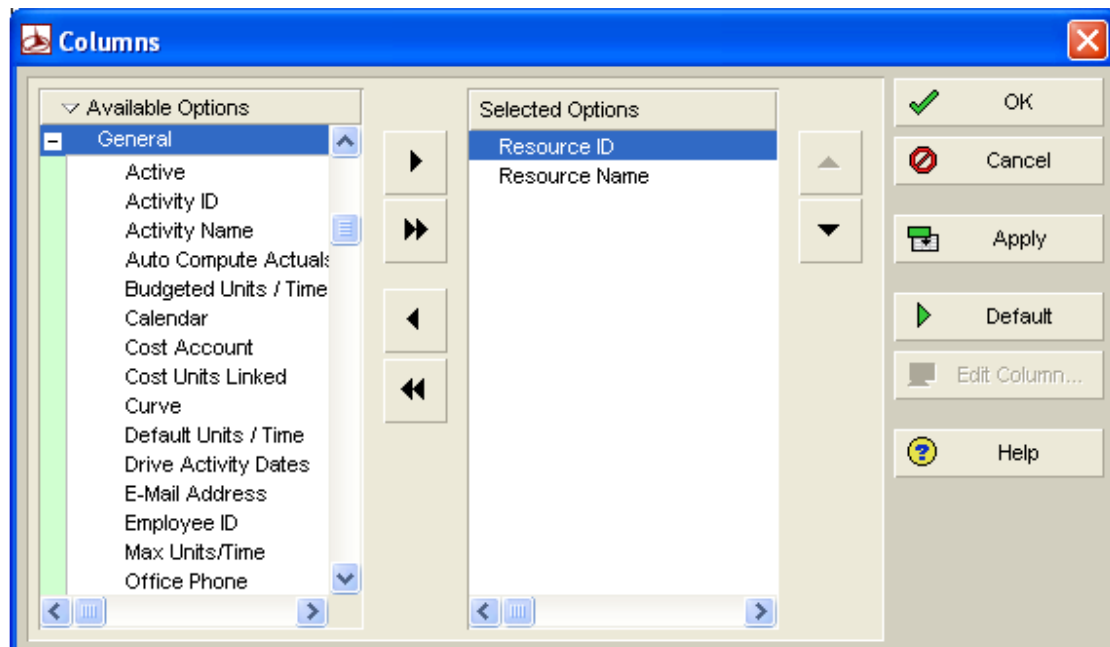
Check Time Distributed Data and Select Activity Resource and Role Assignments. Click Next



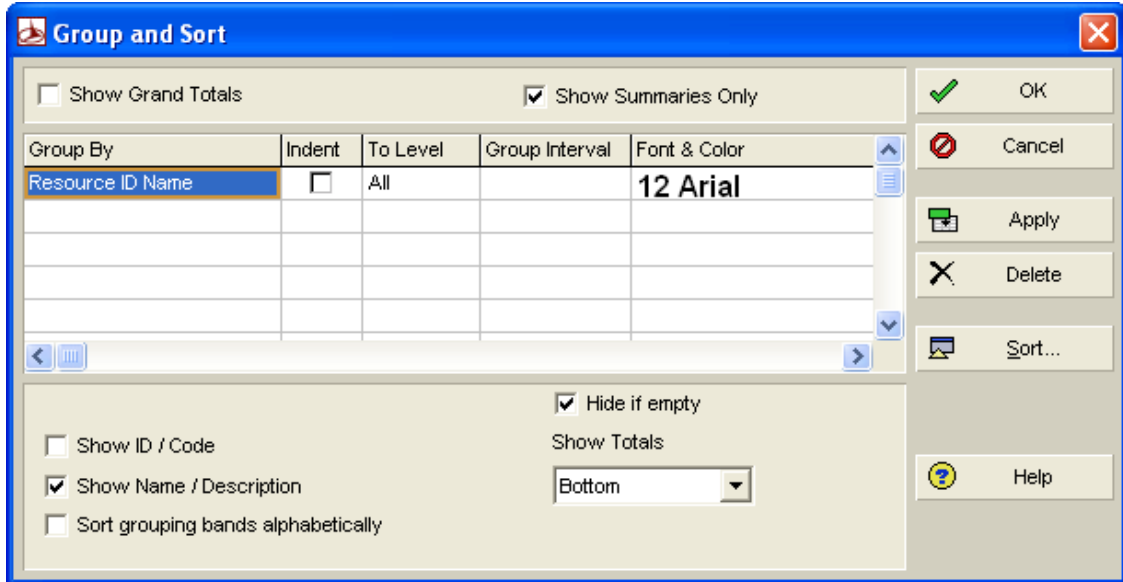
Select Activity Resource and Role Assignments and click Columns



Remove other columns from Selected Options. Click OK

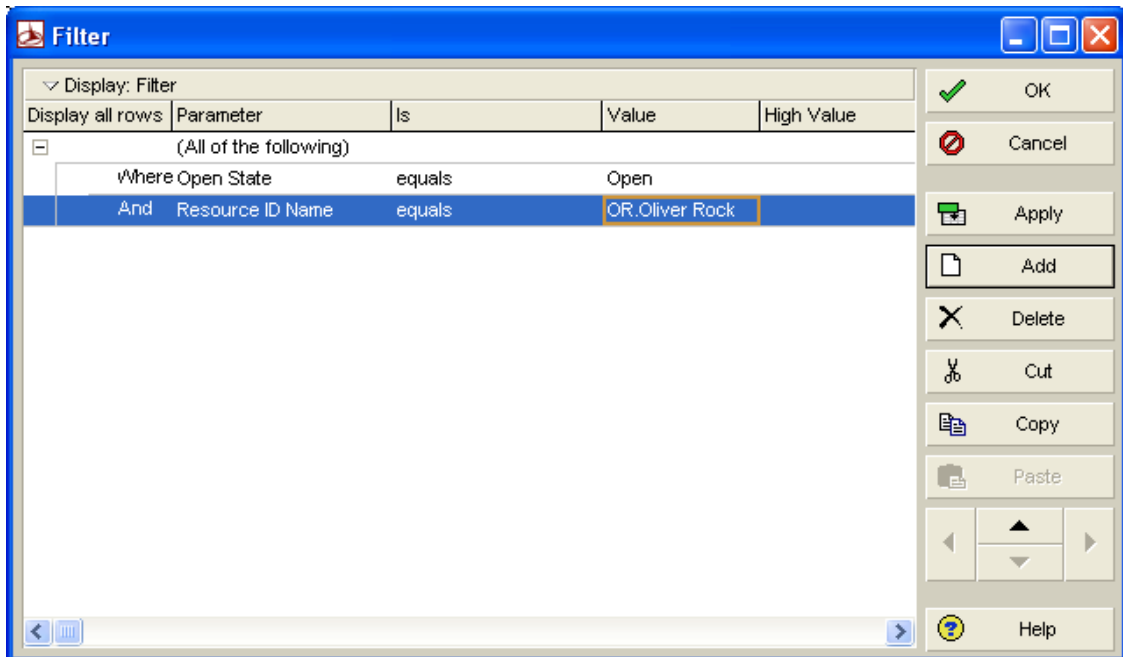


Click Group & Sort from “Group & Sort” and select Group By “Resource ID Name” and click “OK”. Do the same shown in Filter dialog box below. Click OK

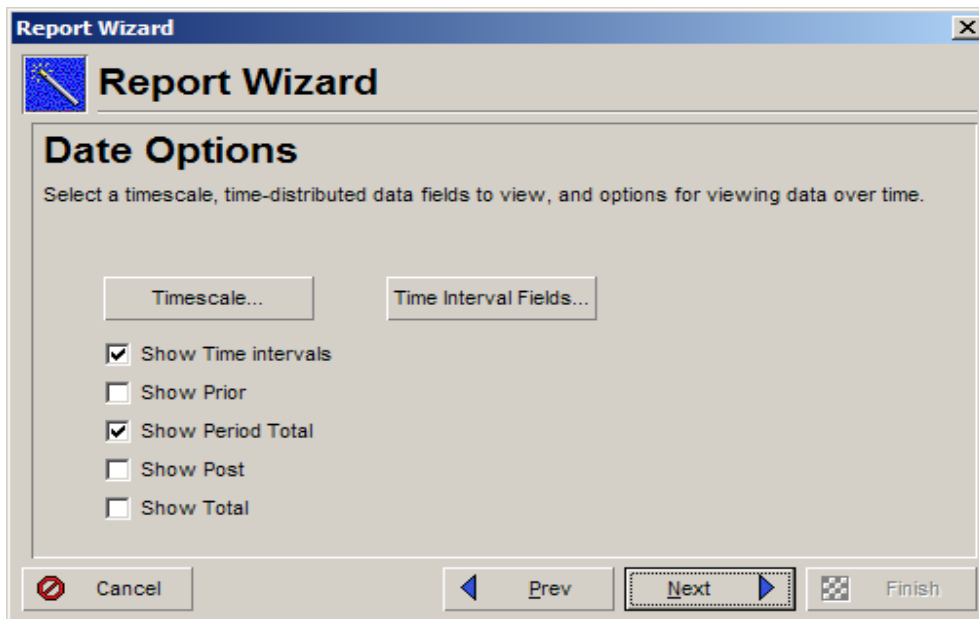


Click Filters from Configure Selected Subject Area dialog box. Do the same shown in Filter dialog box below. Click OK

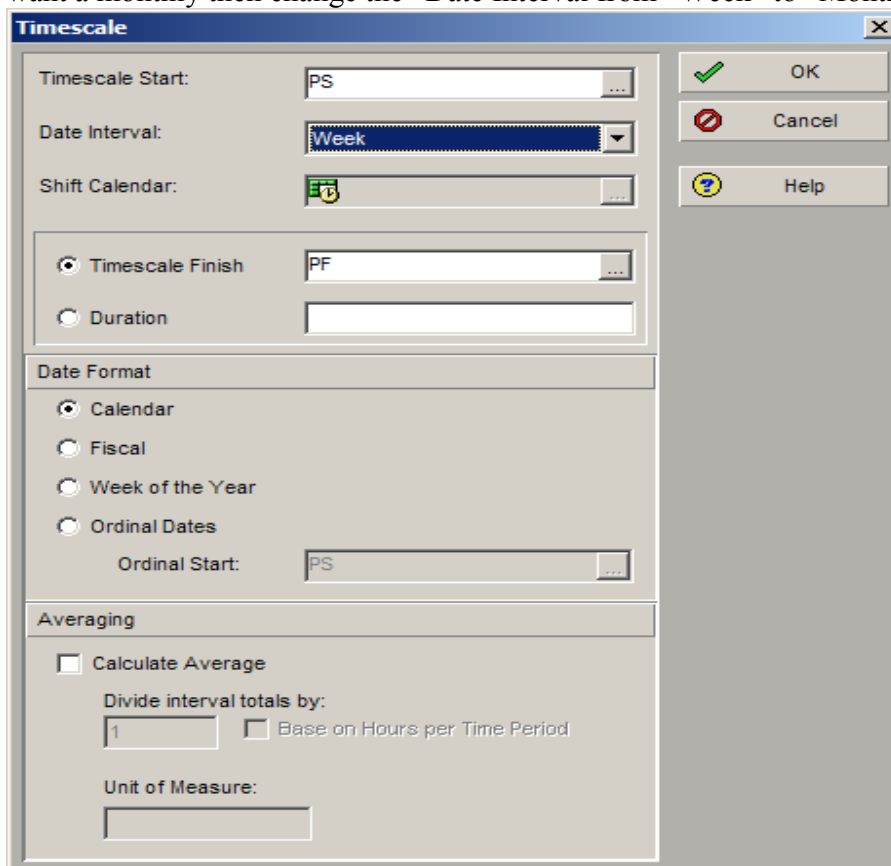
Select the “Resource ID Name equals to “S-Curve” or what ever is the resource you would like to use for generating the curve.



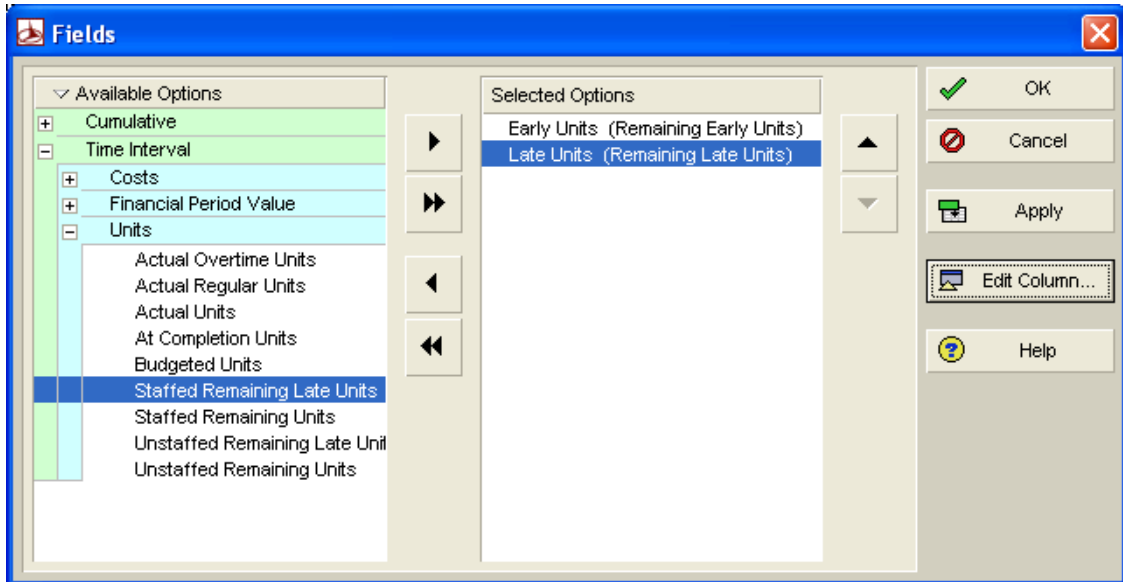
Click Next



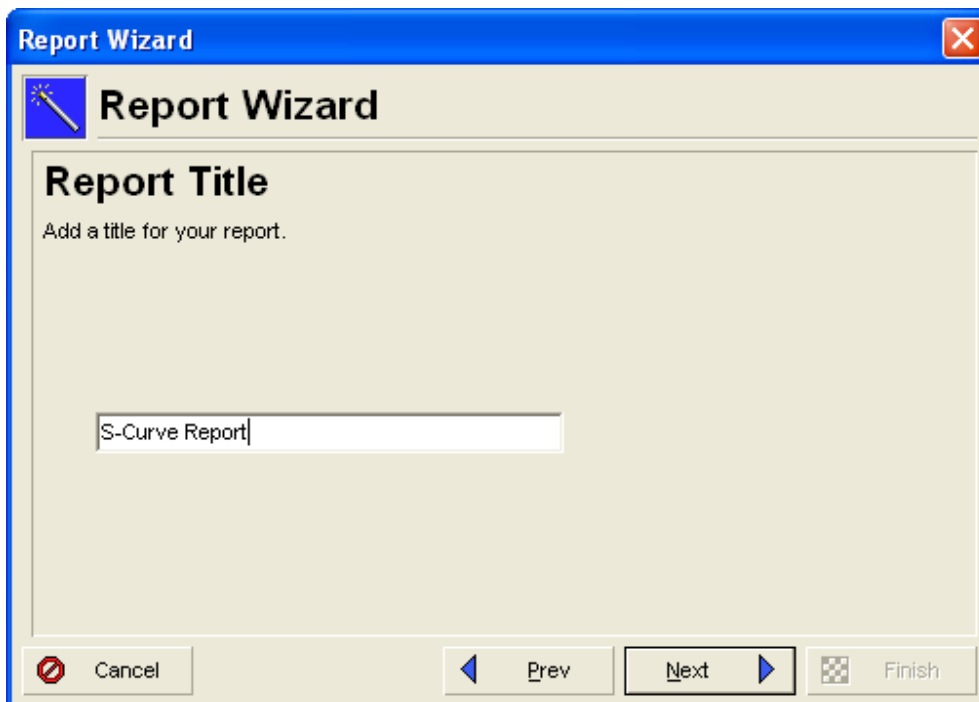
Click Timescale. Change Timescale Start, Date Interval, Timescale Finish field. If you want a monthly then change the “Date Interval from “Week” to “Month” and Click “OK”



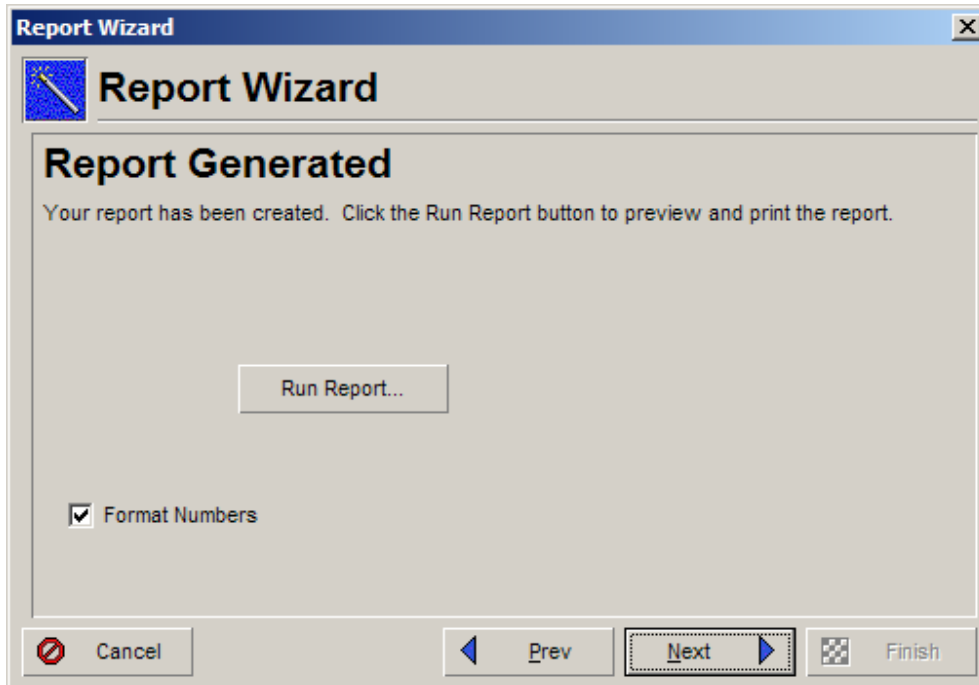
Click Time Interval Fields. Do the same as shown in the figure below. Click OK



Click Next and Give the name of the Report.



Click Next. Click Run Report.



Choose ASCII Text File and define the location of the file that you'd like to save. Determine Field Delimiter and Text Qualifier shown below. Click OK

