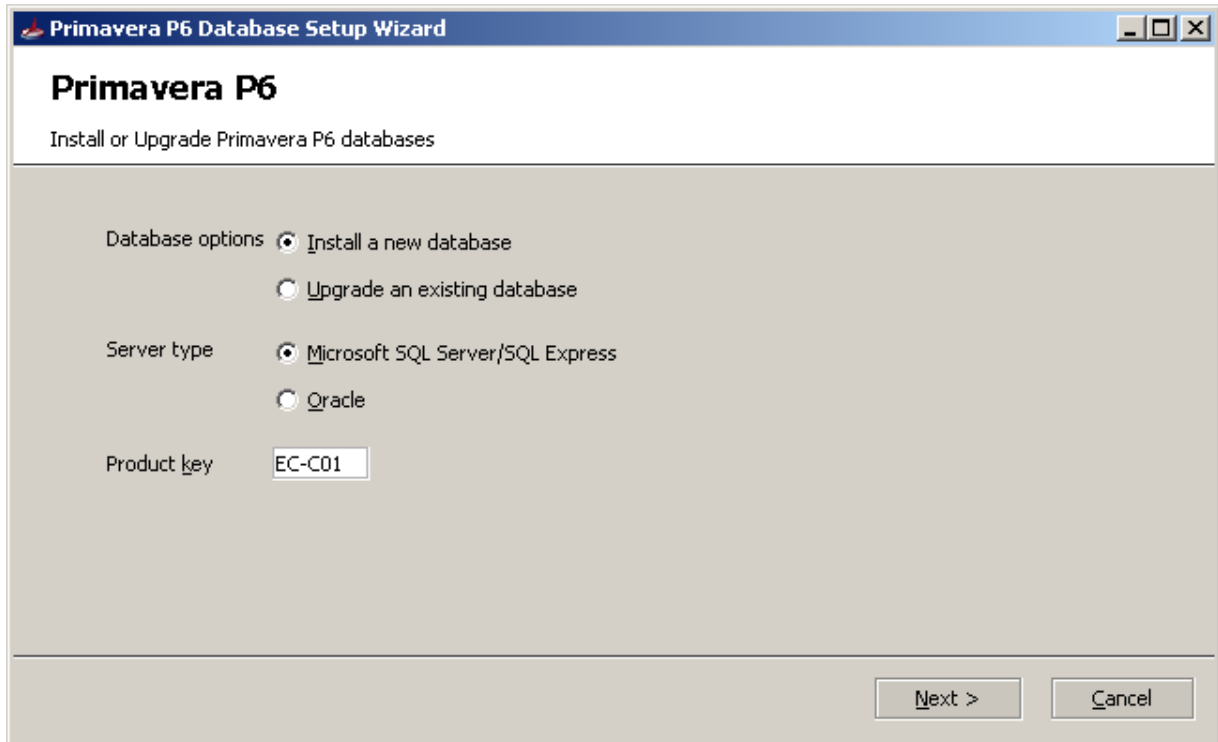


MANUAL Database Creation

Go to Primavera P6 CD 1 and go to install\database and click on “dbsetup.bat”

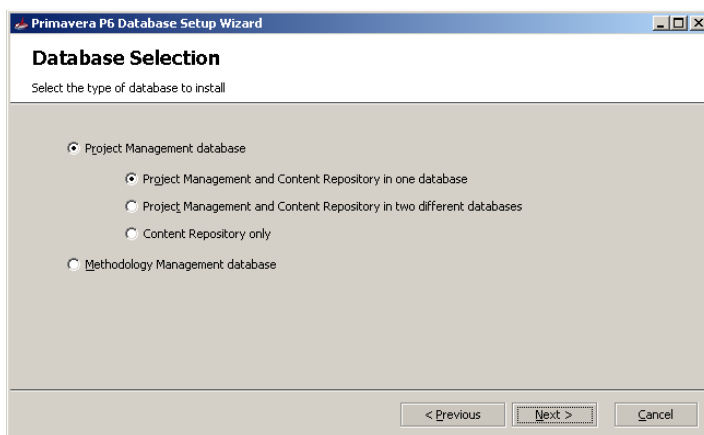


Select “Install a new database”

Server type is Microsoft SQL

Producty Key is EC-C01

Click NEXT



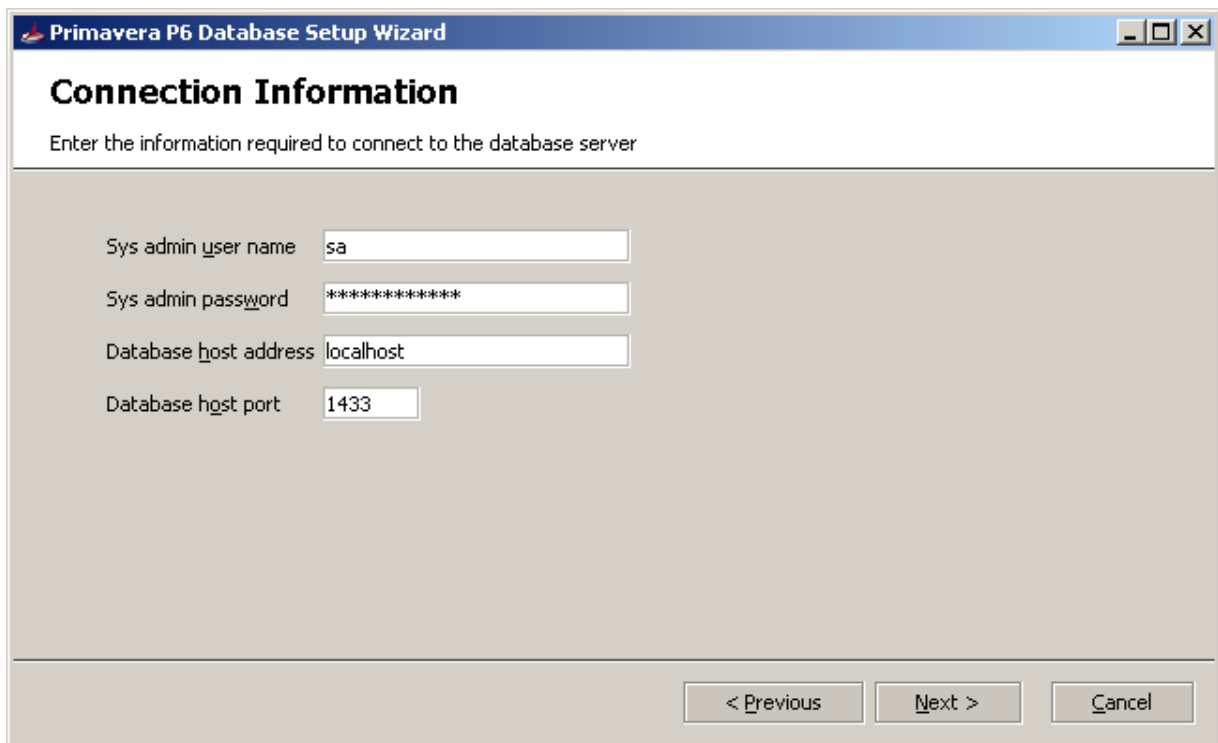
Select as shown above.

Username: sa

Password : Prima123Vera

Localhost : COMPUTERNAME

Port: 1433



The screenshot shows a Windows-style dialog box titled "Primavera P6 Database Setup Wizard". The main heading is "Connection Information" with the instruction "Enter the information required to connect to the database server". Below this, there are four input fields:

- "Sys admin user name" with the value "sa".
- "Sys admin password" with the value "*****".
- "Database host address" with the value "localhost".
- "Database host port" with the value "1433".

At the bottom right of the dialog, there are three buttons: "< Previous", "Next >", and "Cancel".

Click NEXT

Database name is PMDB

Primavera P6 Database Setup Wizard

Configure Microsoft SQL Server/SQL Express Database

Enter the name of the database and the location where the data and log files will be stored.

Database name: PMDB

Data file: C:\Program Files\MSSQL\Primavera\MSSQL.1\MSSQL\DATA\PMDB_DAT.MDF

Log file: C:\Program Files\MSSQL\Primavera\MSSQL.1\MSSQL\DATA\PMDB_LOG.LDF

Database code page: Database default

< Previous Next > Cancel

Click NEXT

Primavera P6 Database Setup Wizard

Configuration Options

Configuration Options

Load sample data

Currency: USD - Dollar

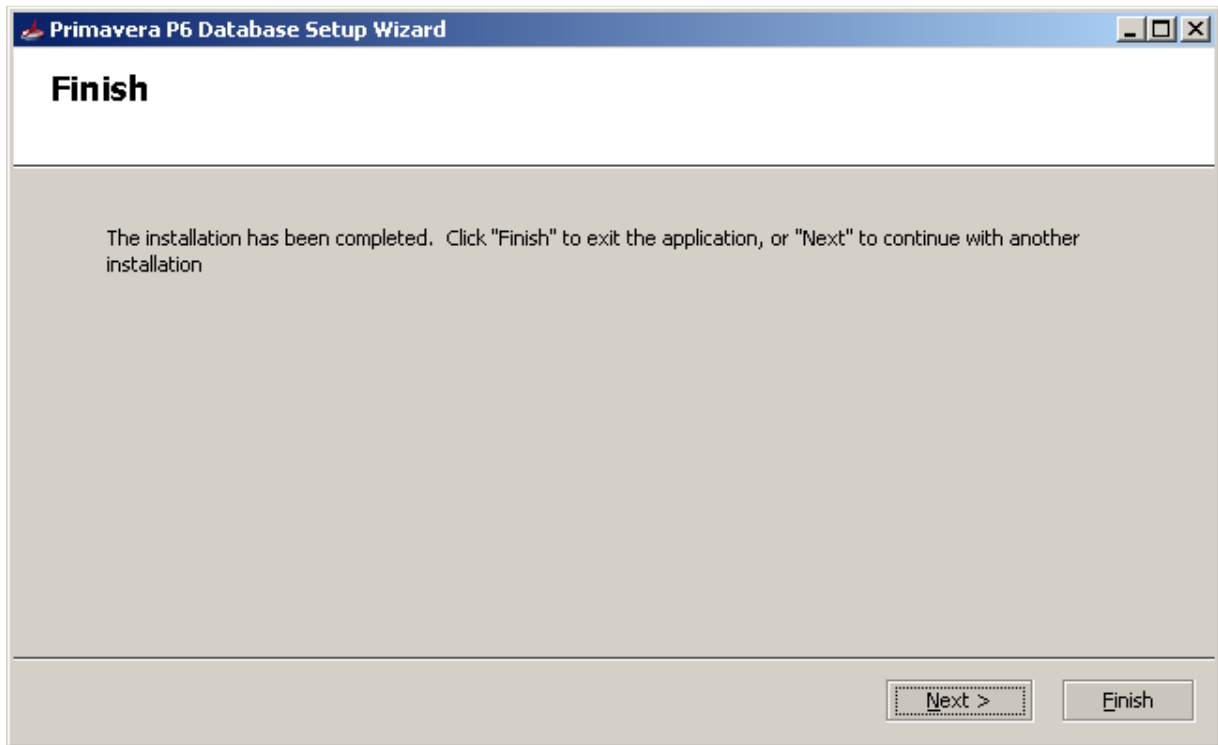
Load license key file

License file: ...

NOTE: You must load a license key file into the database before you can successfully log into the application

Install Cancel

Select LOAD SAMPLE DATA and also LOAD the license text provided to you.



Click FINISH

And then perform Database Configuration.